

Mercedes Benz 500K

Pattern

CREATIVE PARK

<http://www.canon.com/c-park/>



View of completed model * This model was designed for Papercraft and may differ from the original in some respects.

Mercedes Benz 500K

1/24 scale

The K Series was born as the highest class touring car to replace the traditional S/SS series.

First, Model 380K was introduced in 1933, and as early as in the next year, 1934, the 500K Series that had evolved from the 380K replaced it. Conventionally, the letter K represented "Kurz" (short), but the letter K in the new series means Kompressor (with a compressor). It usually exerted 100PS at the maximum, but when the compressor actuated, it achieved 160PS together with a mechanical sound called "a war cry of Walkure" and was able to drive the body that weighs about 2.2t up to 160km/h.

The chassis was equipped with the 4W independent drives and 4W hydraulic brakes with a servo, which were well ahead of its time. In those days, it had been a tradition to consign the bodies of high class cars to noted coach builders, but Mercedes Benz did not choose so but conducted equally brilliant and scrupulous coach work at its own plant in Sindelfingen.

The bodies came with Cabriolet A, B and C and Limousine. The 500K in an elegant 1935 body was a model called special roadster. The production volume is said to be 25.

Data: 5,018cm³ water-cooled 8-cylinder OHV super-charged engine, producing 100PS/160PS; top speed 160km/h.

Masayoshi Oka, Japan Classic Car Association

■ Parts list (pattern) : Five A4 sheets (No. 1 to No. 5)

■ No. of Parts : 91

Build the model by carefully reading the Assembly Instructions.

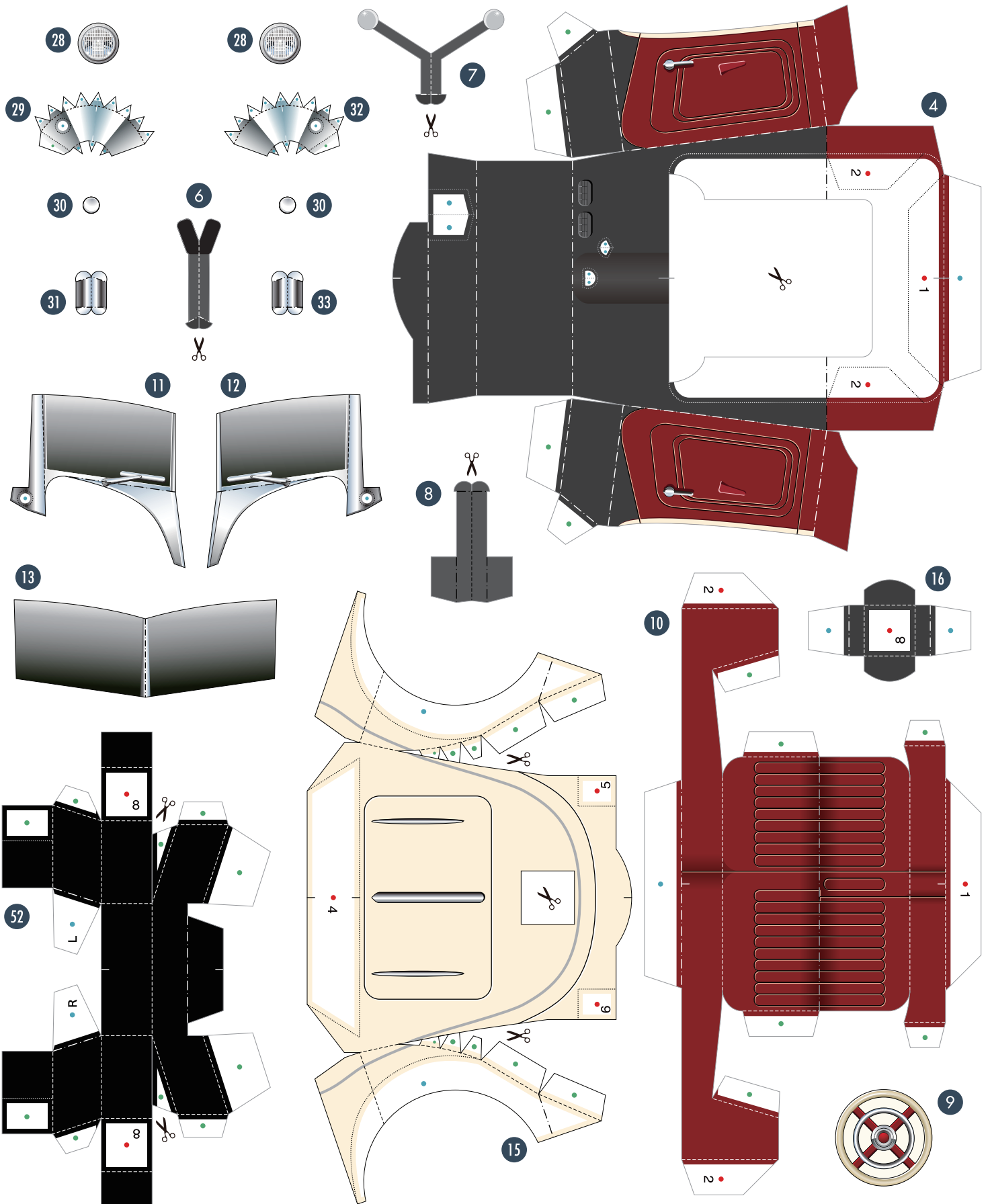
* If you prefer that the rear sides of the paper parts not be white, print the two optional reverse-side printing sheets on thin paper such as standard printer paper and adhere these to the reverse sides of sheet No. 4 using spray adhesive, then build the model as described in the instructions.

Mercedes Benz 500K

Pattern



©Canon Inc. ©Toshimasa Mitsutake

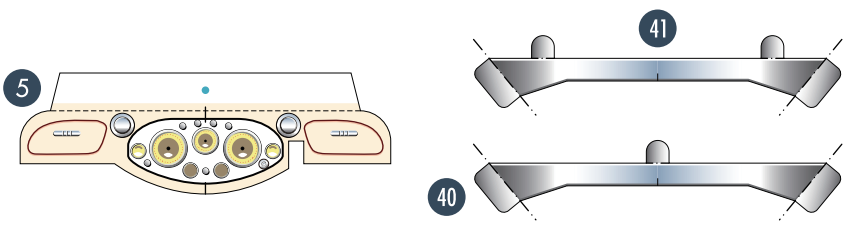
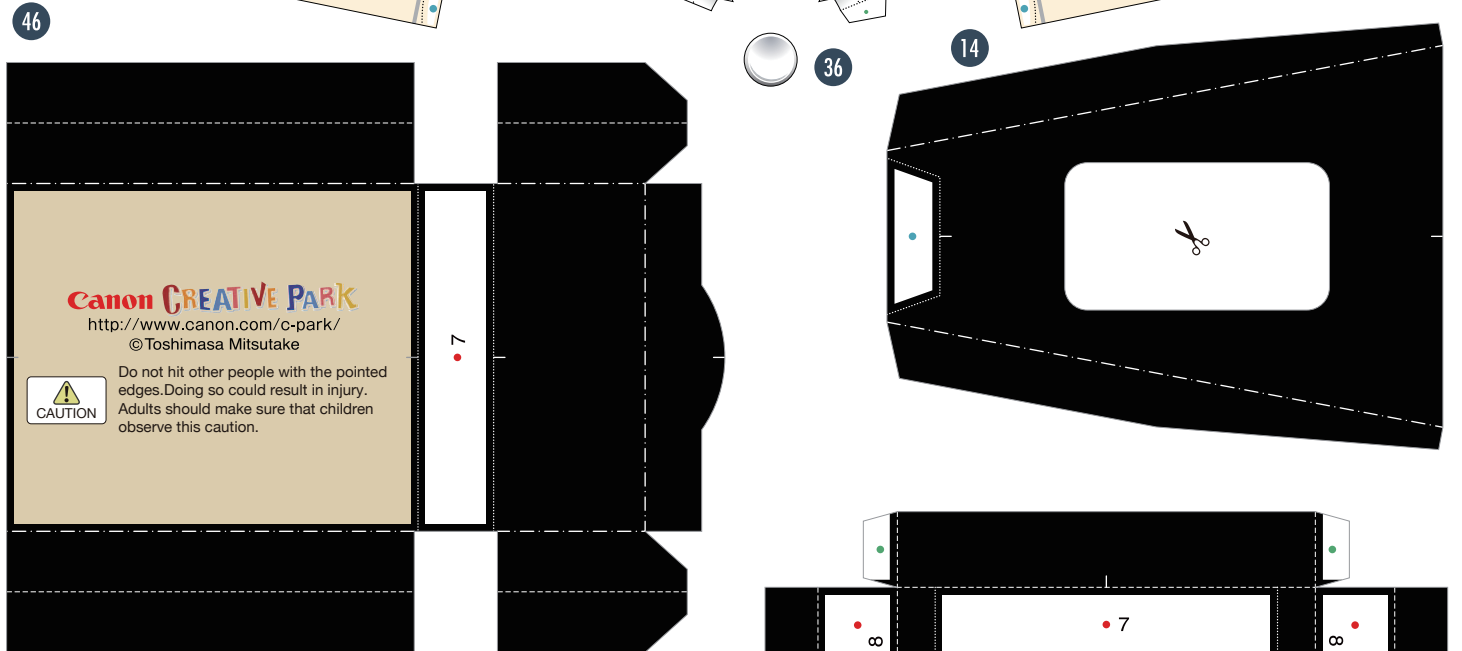
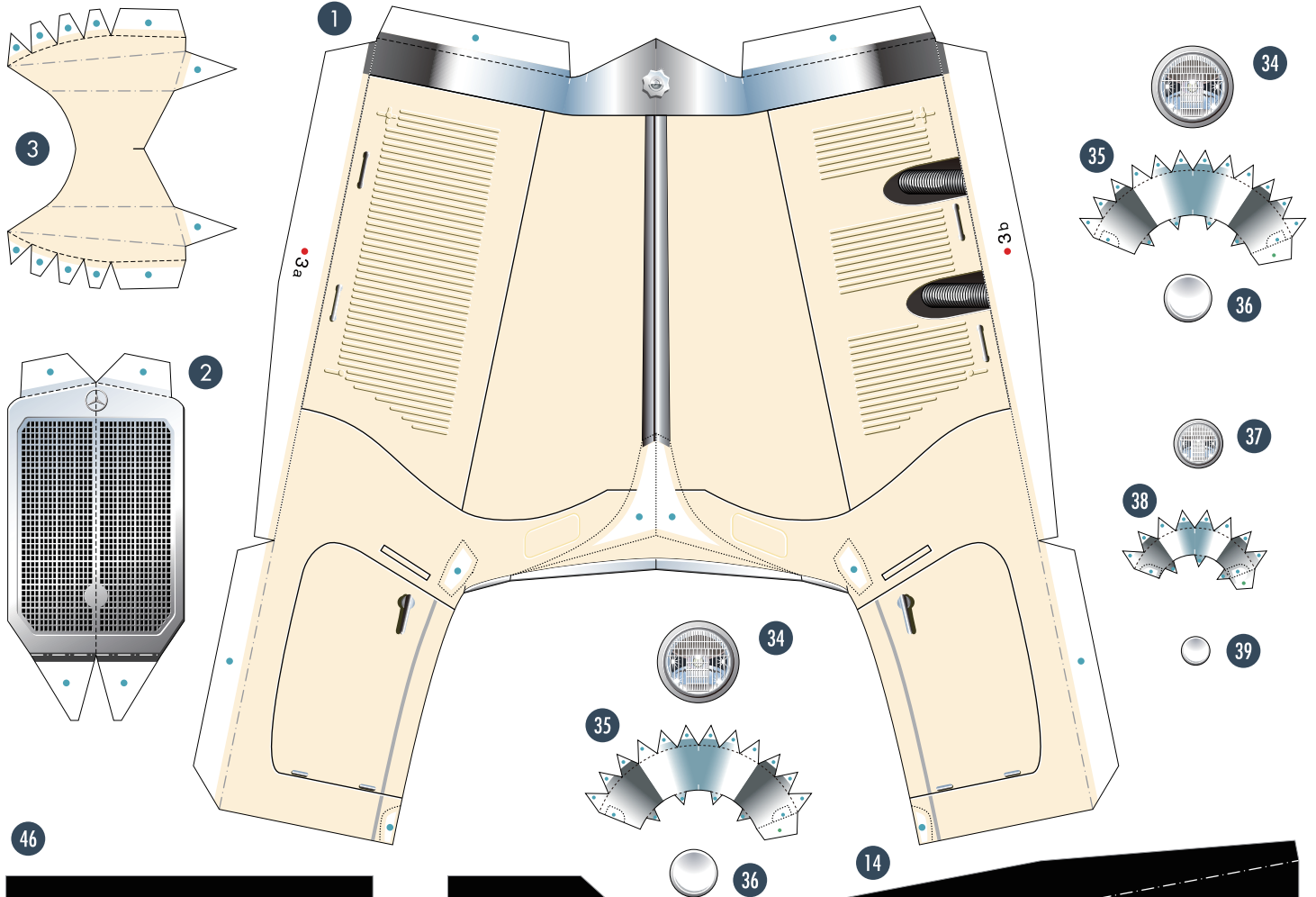


Mercedes Benz 500K

Pattern



©Canon Inc. ©Toshimasa Mitsutake



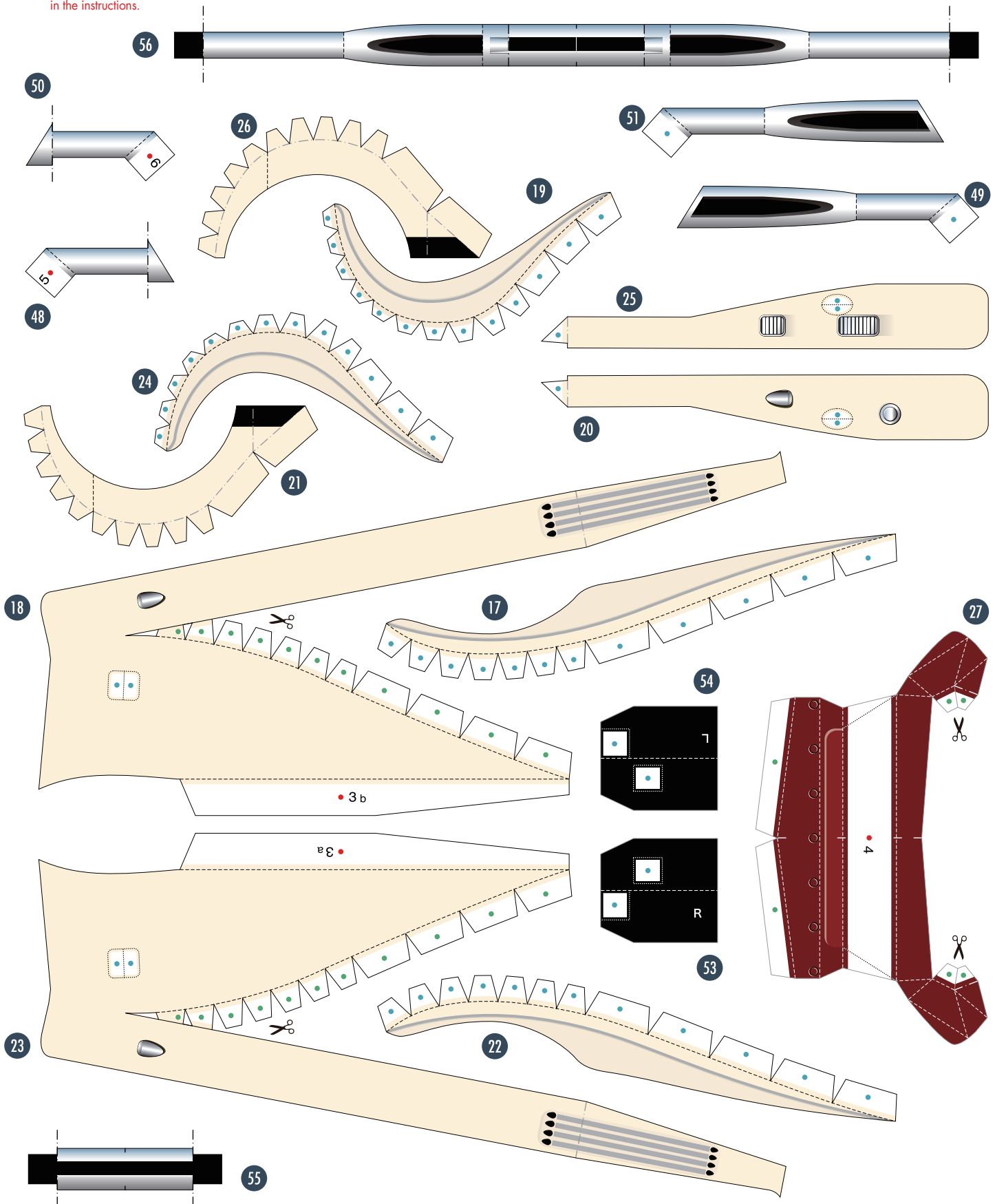
Mercedes Benz 500K

Pattern



©Canon Inc. ©Toshimasa Mitsutake

*If you prefer that the rear sides of the paper parts not be white, print the optional reverse-side printing sheet on thin paper such as standard printer paper and adhere it to the reverse side of this sheet using spray adhesive, then build the model as described in the instructions.



Mercedes Benz 500K

Pattern



©Canon Inc. ©Toshimasa Mitsutake

